

NN-10EX2

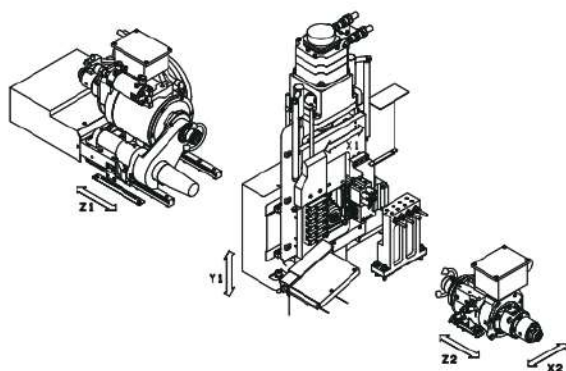
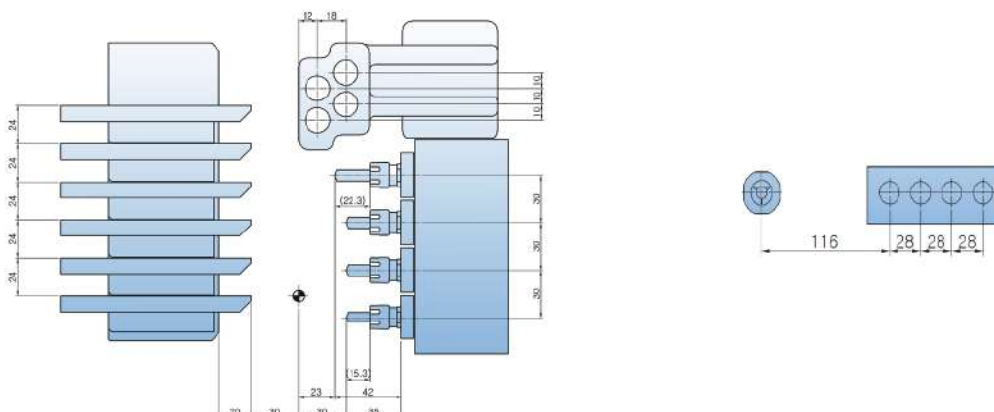
- 
Appropriate for high precision machining under $\Phi 10$

- 
Increased productivity (shortened C.T.)
 - Built-in motor on main & sub spindle
 - Feed rate 36m/min

- 
The latest NC equipped
 - MITSUBISHI M80



TOOL Layout



Feed	Unit	Z1	X1	Y1	Z2	X2
Feed distance	mm	112	64	159	202	202
Rapid feed rate	m/min	30	30	30	30	30

Tools	Unit	NN-10EX2		Remarks	
		Standard	K		
Max. number of tools	EA	22			
Main	O.D. tool	EA	6	$\square 10$	
	I.D. tool	front	EA	4	ER11
		Rear(op)	EA	4	ER11
	Cross drill	EA	4	ER11	
SUB	I.D. tool	EA	4	2	ER11
	Eccentric tool	EA	-	2	ER11

NN-10EX2 Specifications



Content	Specification	Specification Value		
		10EX2		
Machining capacity	Max. machining diameter	Φ10mm		
	Max. machining length	100mm / 1chuck		
	Max. parts unloading length	50mm		
Spindle	Main spindle through-hole diameter	Φ13mm		
	Spindle RPM (Main/Sub)	Max. 15,000rpm/15,000rpm		
	Sub spindle chucking diameter	Φ10mm		
Tool	Type	Type	Standard	K
		Max. number of tools	22	
		Max. machining drill	Φ7mm	
		Max. machining tap	M6	
	Main	O.D. tool	6 (□10X100mm)	
		I.D. tool	4 (ER11) (OP : Rear 4)	
		Cross drill	4 (ER11)	
		Cross drill RPM	10,000rpm	
	SUB	I.D. tool	4 (ER11)	2 (ER11)
		I.D. rotary tool	-	2 (ER11)
Feed	Rapid feed rate	30m/min		
	Min. command unit	0.0001mm		
	C-axis min. command unit (Main/Sub)	0.0001°		
Motor	Main spindle motor	3.7/1.5kW		
	Cross drill motor	0.4kW		
	Sub spindle motor	1.1/0.75kW		
	Sub rotary motor	0.4kW		
	X1,Y1,Z1,Z2 axis feed motor	0.5kW		
	Coolant pump	0.25kW		
	Lubricant pump	0.003kW		
Dimensions and etc.	Main spindle center height	1,000mm		
	Input power capacity	6.8KVA		
	Air pressure/Flow rate	0.6MPa.30L/min		
	Coolant tank	110L		
	WxDxH	1,713 x 825 x 1,650mm		
	Weight (Standard accessories included)	1,500kg		
NC	NC (Mitsubishi)	M80		
	NC display	8.4 Color TFT LCD		
	Memory capacity	500KB		
	No. of tool offset	256sets		

Standard Accessories
I.D. tool device
Tool holder
Rotary guide bush
Rotary guide bush drive unit
Drill holder
Main : Chuck sleeve/Spring/Spindle cap(1set)
Sub : Chuck sleeve/Spring/Spindle cap(1set)
Automatic power turn-off device
Automatic oiling device
Coolant pump
Coolant flow detector
Overload detection function
Door interlock switch
Working light(LED)
Parts catcher
Tool set
Levelling pad
Three-color warning light
Display language (ENG/CHN/KOR/ETC)

Optional Accessories
Main spindle drill unit (E-1 unit)
E3 UNIT
Long drill holder
Fixed guide bush
Tap breakage detector
Tool air blow
Rear ejection unit (less than Φ7mm)
Spindle tube liner for small parts
Large-sized lubricant pump 1.8ℓ
Chip conveyor & Chip box
Medium pressure coolant
Oil mist collector
Custom colors
Tooling

FLOOR Layout

