

NN-32UB8

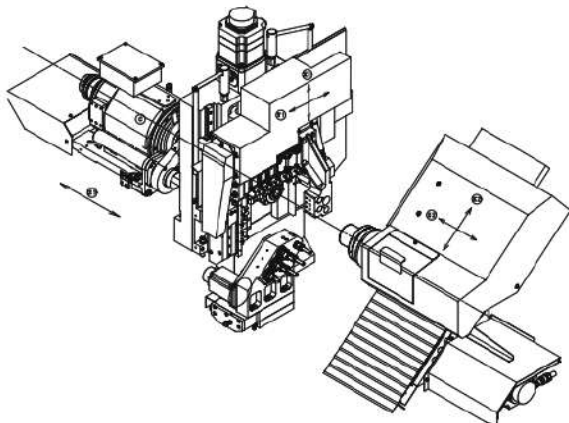
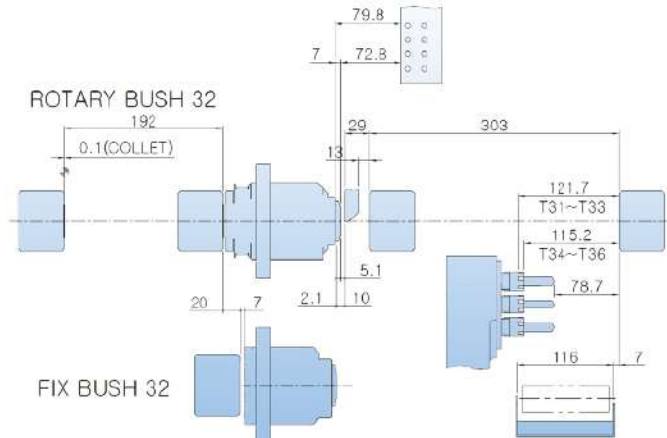
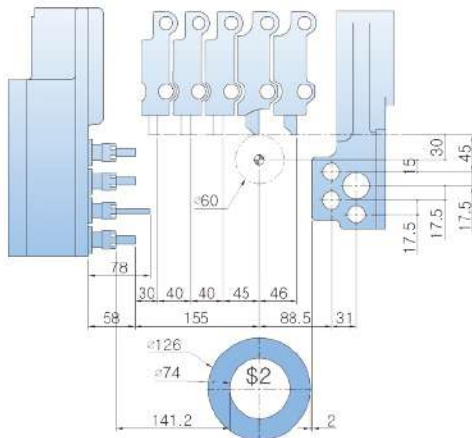
The best selling model
 - Horizontal tool post
 - Dovetail structure

Efficient tool layout
 - Shortened cycle time

High efficiency, reasonable price



TOOL Layout



Feed	Unit	Z1	X1	Y1	Z2	X2
Feed distance	mm	194	138	288	304	222
Rapid feed rate	m/min	24	24	24	24	24

Tools	Unit	NN-32UB8			Remarks	
		Standards	K	K2		
Max. number of tools	EA	21	23			
Main	O.D. tool	EA	5		□12.7X3, □16X2	
	I.D. tool	Front	EA	4		ER20X1,ER16X3
		Rear(OP)	EA	4		ER20X1,ER16X3
	Cross drill	EA	4		ER16	
SUB	O.D. tool	EA	1	-	-	□12.7
	I.D. tool	EA	3	2	3	ER16
	Eccentric tool	EA	-	2	3	ER16

NN-32UB8 Specifications



Content	Specification	Specification Value			
		32UB8			
Machining capacity	Max. machining diameter	Φ32mm			
	Max. machining length	190mm / 1chuck			
	Max. parts unloading length	93mm(N.80mm)			
Spindle	Main spindle through-hole diameter	Φ34mm			
	Spindle RPM (Main/Sub)	Max.8,000rpm/6,000rpm			
	Sub spindle chucking diameter	Φ32mm			
Tool	Type	Type	Standard	K	K2
		Max. number of tools	21		
		Max. machining drill	Φ10mm		
		Max. machining tap	M8		
	Main	O.D. tool	5 (□12.7x3+□16X2X150mm)		
		I.D. tool	4 (ER16X3+ER20X1) (OP : Rear 4)		
		Cross drill	4 (ER16)		
		Cross drill RPM	6,000rpm		
	SUB	O.D. tool	1 (□12)	—	—
		I.D. tool	3 (ER16)	2 (ER16)	3 (ER16)
I.D. rotary tool		—	2 (ER16)	3 (ER16)	
Feed	Rapid feed rate	24m/min			
	Min. command unit	0.0001mm			
	C-axis min. command unit (Main/Sub)	0.0001°			
Motor	Main spindle motor	5.5/3.7kW(Mitsubishi) / 5.5/3.7kW(Fanuc)			
	Cross drill motor	1.5kW(Mitsubishi) / 1.0kW(Fanuc)			
	Sub spindle motor	3.7/1.5kW(Mitsubishi) / 3.7/1.5kW(Fanuc)			
	Sub rotary motor	0.9kW(Mitsubishi) / 1.0kW(Fanuc)			
	Y1 axis feed motor	0.5kW(Mitsubishi) / 1.4kW(Fanuc)			
	X1,Z1,X2,Z2 axis feed motor	1.0kW(Mitsubishi)/ 1.4kW(Fanuc)			
	Coolant pump (Main/Sub)	0.25kW			
Dimensions and etc.	Lubricant pump	0.003kW			
	Main spindle center height	1,000mm			
	Input power capacity	17KVA			
	Air pressure/Flow rate	0.6MPa.20L/min			
	Coolant tank	125L			
	WxDxH	2,386 x 1,109 x 1,676mm			
NC	Weight (Standard accessories included)	2,450kg			
	NC (Mitsubishi/Fanuc)	M70V Type A / Oi TF (Fanuc)			
	NC display	8.4 Color TFT LCD			
	Memory capacity	500KB(Mitsubishi) / 1MB(Fanuc)			
	No. of tool offset	80sets(Mitsubishi) / 128sets(Fanuc)			
	Background edit function				
	C-axis control (Main/Sub spindle)				
	User macro function				
	Nose radius compensation				
	Corner chamfering/corner rounding				
	Fixed cycle				
	Complex fixed cycle				
	Geometric commands				
	Instruction manual				
	Serial In / Output interface				
CF card / USB interface					

Standard Accessories
I.D. tool device
Cross drill unit
Manual pulse generator(MPG)37P
Coolant unit
Rotary guide bush
Drill holder
Tool holder
Main : Chuck sleeve/Spring/Spindle cap(1set)
Sub : Chuck sleeve/Spring/Spindle cap(1set)
Automatic power turn-off device
Automatic oiling device
Coolant pump
Coolant flow detector
Overload detection function
Door interlock switch
Working light(LED)
Parts conveyor
Levelling pad
Three-color warning light
Display language (ENG/CHN/KOR/ETC)

Optional Accessories
Cross drill X 5
E3 UNIT
Long drill holder
Fixed guide bush
Tap breakage detector
Tool presetter
Tool air blow
Rear ejection unit
Spindle tube liner for small parts
Chip conveyor & Chip box
Medium pressure coolant
Oil mist collector
Custom colors
Tooling

FLOOR Layout

