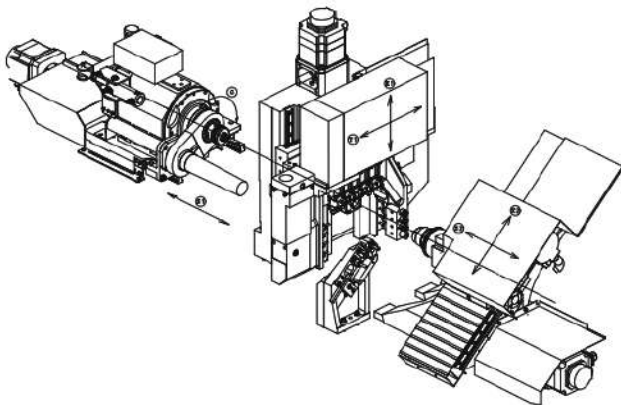
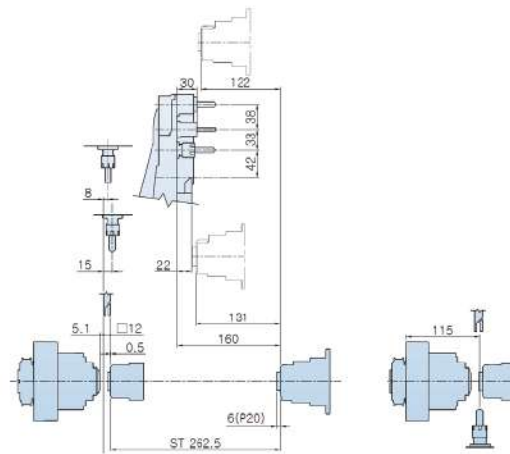
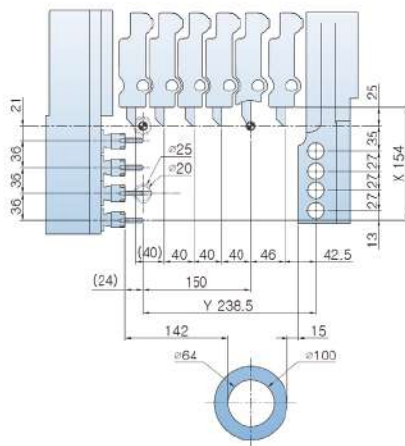


NN-20/25UB8

- NC controller selectable
- MITSUBISHI, FANUC
- Expanded tool options
- Eccentric turning operation on sub tool
- Guide / Non-guide bush type
- Minimized remaining material (Non-guide bush type)
- Specialized for high-precision parts
- High efficiency, reasonable price



TOOL Layout



Feed	Unit	Z1	X1	Y1	Z2	X2
Feed distance	mm	200	133	252	263	222
Rapid feed rate	m/min	24	24	24	24	24

Tools	Unit	NN-20/25UB8			Remarks	
		Standard	K	K2		
Max. number of tools	EA	21	23			
Main	O.D. tool	EA	5		□12.7(□12.7X3,□16X2)	
	I.D. tool	Front	EA	4		ER16
		Rear(opt)	EA	4		ER16
Cross drill	EA	4			ER16	
SUB	O.D. tool	EA	1	-	-	□10
	I.D. tool	EA	3	2	3	ER16
	Eccentric tool	EA	-	2	3	ER16

Content	Specification	Specification Value			
		NN-20/25UB8			
Machining capacity	Max. machining diameter	Φ20mm/Φ25mm			
	Max. machining length	200mm			
	Max. parts unloading length	105mm			
Spindle	Main spindle through-hole diameter	Φ24mm/Φ27mm			
	Spindle RPM (Main/Sub)	Max10,000rpm / 8,000rpm			
	Sub spindle chucking diameter	Φ20mm/Φ25mm			
Tool	Type	Type	Standard	K	K2
		Max. number of tools	21		
		Max. machining drill	Φ10mm		
	Main	Max. machining tap	M8		
		O.D. tool	5 (□12.7x150) / 5 (□12.7x3+□16x2x150)		
		I.D. tool	4 (ER16) (OP Rear 4)		
		Cross drill	4 (ER16)		
	SUB	Cross drill RPM	6,000rpm		
		O.D. tool	1 (□10x80)	—	—
		I.D. tool	3(ER16)	2(ER16)	3(ER16)
Eccentric drill		—	2(ER16)	3(ER16)	
FEED	Rapid feed rate	24m/mim			
	Min. command unit	0.0001mm			
	C-axis min. command unit (Main/Sub)	0.0001°			
Motor	Main spindle motor	2.2/3.7kw(Mitsubishi)/2.2/3.7kw(Fanuc)			
	Cross drill motor	0.75kw(Mitsubishi)/1.0kw(Fanuc)			
	Sub spindle motor	1.5/0.55kw(Mitsubishi)/2.2/1.5kw(Fanuc)			
	Sub rotary motor	0.4kw(Mitsubishi)/0.5kw(Fanuc)			
	Y1,X2,Z2 axis feed motor	0.5(Mitsubishi)/1.4(Fanuc)			
	X1,Z1 axis feed motor	1.0kw(Mitsubishi)/1.4kw(Fanuc)			
	Coolant pump (Main/Sub)	0.25kW			
Dimensions and etc.	Lubricant pump	0.003kW			
	Main spindle center height	1,000mm			
	Input power capacity	12KVA			
	Air pressure/Flow rate	0.6MPa.35L/min			
	Coolant tank	110L			
	WxDxH	2,162x1,090x1,676mm/2,300x1,090x1,676mm			
NC	Weight (Standard accessories included)	2,135kg			
	NC (Mitsubishi/Fanuc)	Mitsubishi M70 /Fanuc Oi TF			
	NC display	8.4 Color TFT LCD			
	Memory capacity	500KB(Mitsubishi) / 1MB(Fanuc)			
	No. of tool offset	80sets(Mitsubishi) / 128sets(Fanuc)			
	Background edit function				
	C-axis control (Main/Sub spindle)				
	User macro function				
	Nose radius compensation				
	Corner chamfering/corner rounding				
	Fixed cycle				
	Complex fixed cycle				
	Geometric commands				
	Instruction manual				
	Serial In / Output interface				
CF card / USB interface					

Standard Accessories
I.D. tool device
Cross drill unit
Manual pulse generator(MPG)37P
Coolant unit
Rotary guide bush
Drill holder
Tool holder
Main : Chuck sleeve/Spring/Spindle cap(1set)
Sub : Chuck sleeve/Spring/Spindle cap(1set)
Automatic power turn-off device
Automatic oiling device
Coolant pump
Coolant flow detector
Overload detection function
Door interlock switch
Working light(LED)
Parts conveyor
Levelling pad
Three-color warning light
Display language (ENG/CHN/KOR/ETC)

Optional Accessories
NC (Fanuc Oi-TF)
Cross drill X 5
E3 UNIT
Long drill holder
Fixed guide bush
Tap breakage detector (Main/sub)
Tool presetter
Tool air blow
Rear ejection unit
Spindle tube liner for small parts
Large-sized lubricant pump 1.8ℓ
Chip conveyor
Medium pressure coolant
Oil mist collector
Custom colors
Tooling

FLOOR Layout

